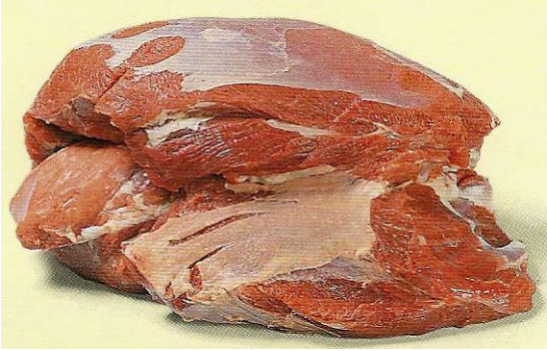


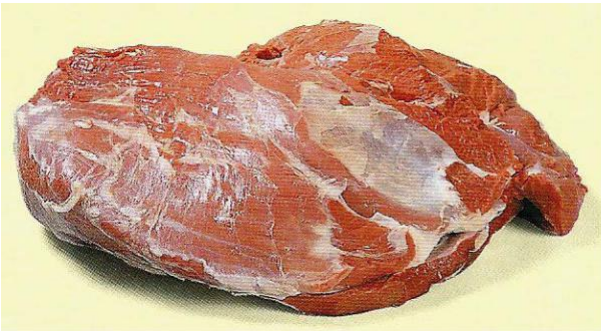
I NOSTRI TAGLI

NOCE



Utilizzo :
fettine, scaloppe

FESA FRANCESE



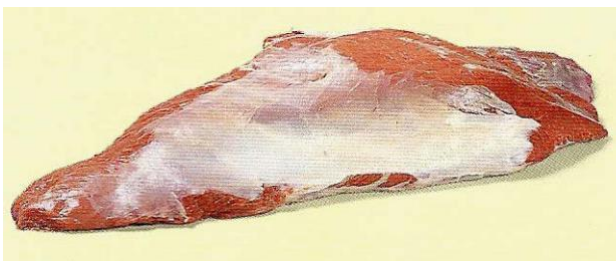
Utilizzo :
fettine, scaloppe

SCAMONE



Utilizzo :
fettine, scaloppe

SOTTOFESA



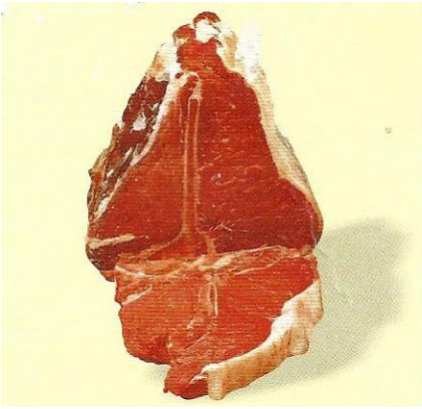
Utilizzo : *fettine, cotolette, stracotti, roast - beef all'inglese*

FILETTO



*Utilizzo :
fettine alla griglia (tagliata)*

LOMBATA



*Utilizzo :
fettine, fiorentine, roast - beef*